

**VS-4 ALARM PANEL**  
**INSTRUCTION MANUAL**

**VALET**



## **VALET INTERNATIONAL**

### **MELBOURNE**

2-4 Overseas Drive  
Noble Park Vic 3174

Phone: (03) 790 0888  
FAX (03) 790 0955

### **SYDNEY**

12 Rowood Road  
Prospect NSW 2149

Phone: (02) 688 4500  
FAX (02) 896 1163

Copyright © by VALET INTERNATIONAL

April 1990

*To the best of our knowledge, the information contained in this manual is correct at the time of going to print. Valet International reserves the right to make changes to the features and specifications at any time and without notice in the course of product development.*

# TABLE OF CONTENTS

---

## INTRODUCTION

---

Terminology .....	5
Features .....	6
VS-4 Optional Equipment.....	7
Specifications.....	8

---

## CONTROLS AND INDICATIONS

---

Keypad .....	9
Audible Indications .....	9
Visual Indications.....	10
Zone Indications .....	11

---

## PROGRAMMING

---

How to Enter Program Mode .....	13
How to Program .....	13
Access Codes.....	14
Entry Delay Time .....	15
Exit Delay Time.....	15
Monitor Mode Type .....	16
Zones to be Monitored.....	16
Programming Summary .....	17

---

## OPERATION

---

General Information.....	19
Operating Rules .....	19
Arming the Control Panel.....	20
Disarming the Control Panel.....	21
Monitor Mode.....	22
Emergency Panic .....	23
Alarms .....	24
Resetting an Alarm .....	24
Alarm Memory .....	25
Excluding Zones.....	26
Including Zones .....	27

---

## TESTING AND TROUBLESHOOTING

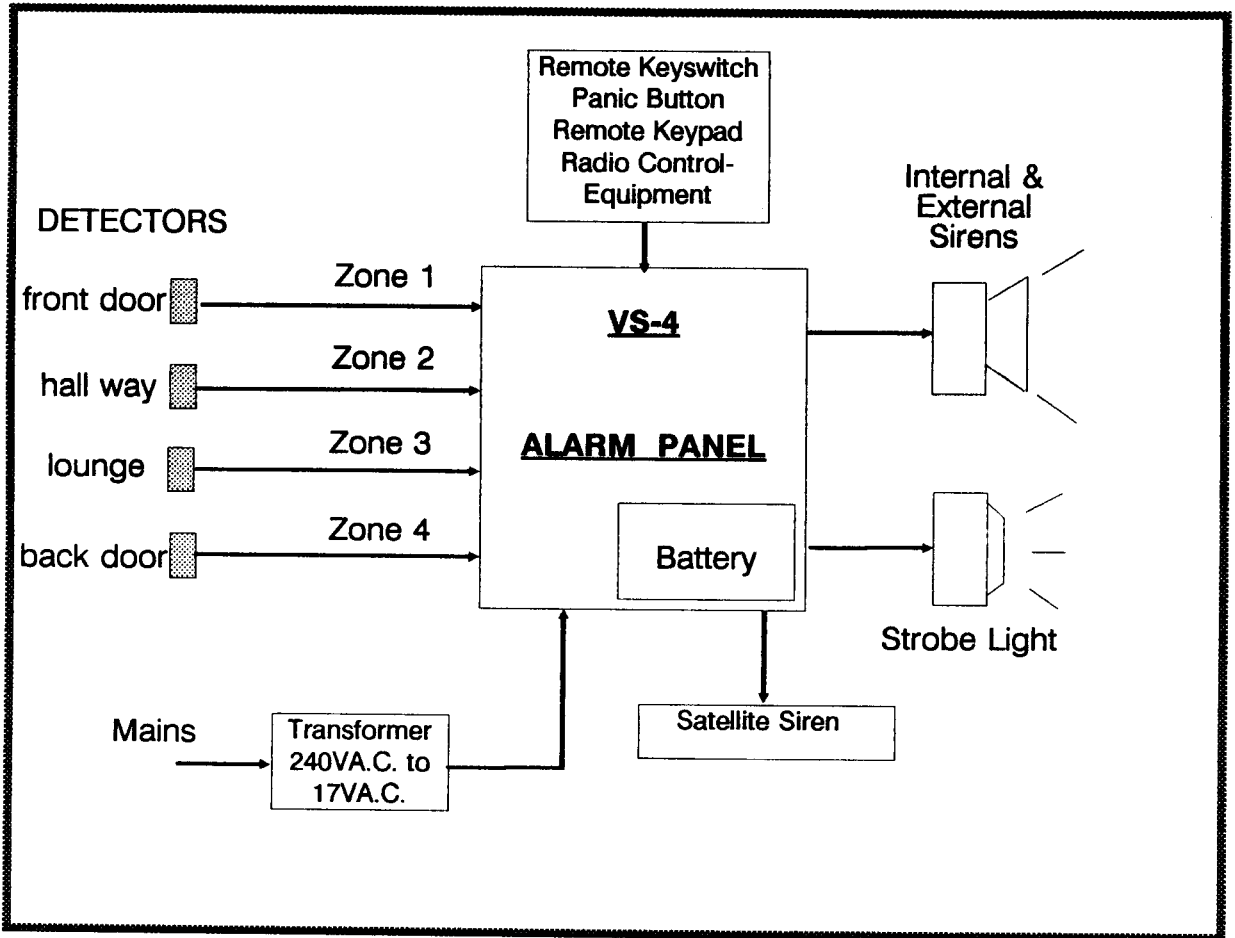
---

Testing.....	29
Troubleshooting Guide.....	30
Installation Record.....	31
Operation and Zone Summary .....	Rear Cover

---

## VS-4 ALARM PANEL

### TYPICAL INSTALLATION



# INTRODUCTION

---

Thank you for purchasing a VALET VS-4. Please do not be frightened by its apparent complexity. The Panel is very powerful but also very easy to use and you only need to use as many or as few features as you require.

At the very least, you need only know how to ARM and DISARM the Panel plus have a basic

understanding of the indicators. Please take the time to read this manual so that you understand the full benefits of the VALET VS-4 Alarm Panel.

---

## TERMINOLOGY

---

The microcomputer based **ALARM PANEL** forms the heart of your security system and connects to all other equipment. Each **ZONE** of the Panel will be connected to one or more detection devices to protect an area such as the front door, hallway, windows, etc.

The Panel is said to be **ARMED** when it is set to detect an intruder. At other times it is **DISARMED**.

Normally a zone is considered **SECURED**. Activation of a detector will cause the zone to be **UNSECURED** and may cause an alarm.

Detectors such as fire detectors and panic buttons must be able to generate an alarm at all times regardless of the Panel setting. A zone with this assignment is called a **24 HOUR ZONE**.

Before leaving the premises, you must **ARM** the Panel to enable it to detect intruders and generate an alarm. After **ARMING**, the Panel will ignore most detectors for the **EXIT DELAY TIME** to enable you to depart without triggering an alarm.

When you enter the premises, the Panel will ignore selected zones for the **ENTRY DELAY TIME** and will not alarm unless you fail to **DISARM** the panel during this allowed time.

If you wish to protect one area while you occupy another, **MONITOR MODE** allows selected zones to be Armed while leaving others Disarmed.

The Control Panel housing and the metal covers over external sirens are protected by **TAMPER** switches to detect someone attempting to disable the security system. Activation of these switches will cause an instant **TAMPER ALARM**.

If a detector becomes faulty, you can **EXCLUDE** the associated zone so that it is totally ignored and cannot generate an alarm. **INCLUDING** the zone will enable it to generate an alarm again.

The Control Panel is fitted with a **STAND-BY BATTERY** to ensure your security system continues to operate if the **MAINS POWER** is interrupted. This battery is checked every hour and whenever you Arm the Panel.

Whenever an alarm occurs, it may be silenced by entering an **ACCESS CODE**, otherwise it will reset at the end of **RESET TIME**. All alarms are stored in **MEMORY** and may be retrieved at any time by entering **MEMORY MODE**.

---

## FEATURES

---

- The **VALET VS-4** is one part of an integrated range of equipment.
- 4 Access codes.
- Monitor mode (partial Arming). Simple operation allows selected zones to be Armed while others are ignored. Ideal for monitoring doors and windows while you are safe inside.
- Additional security is provided by the various programming options:
  - Arm via a code
  - Exclude zones via a code
  - Indication of zones that are unsecured when Arming
- Special interface to allow the connection of VALET Remote Keypad which offers operation of the Panel from a remote location.
- Unique keyswitch input to allow simple remote operation of the Control Panel.
- Easy connection of the **VALET** Satellite Siren to greatly increase the security of your system.
- The Control Panel housing has 4 separate tamper systems - Keypad, Wall, Lid and Panel impact. The Panel impact tamper system protects against Control Panel intrusion by heavy impacts. These tampers are protected 24 hours a day.
- Outputs are separately fused.
- Unique dynamic input system which will detect any component failure of the zone input circuitry and generate an alarm.
- ALL inputs and outputs are heavily protected against lightning and high voltage power supply transients. An earth terminal is provided for extra protection.
- TRUE DYNAMIC BATTERY TEST under load, every hour and when Arming the Panel. Your system will warn you in advance of possible battery failure. Works irrespective of whether the mains is on or off.
- A large 2.2 AHr backup battery and a 1.4 amp plug-pack transformer provides more than sufficient current to maintain the operation and security of the entire system, even under full alarm conditions.
- The mains input is constantly monitored. A warning is given when the mains is disconnected.
- Audible warnings to indicate trouble when Arming.
- Comprehensive Memory Mode for easy retrieval of important events such as Primary Alarms, Secondary Alarms, Tamper Alarms, Low Battery and Mains Fail.
- All Programming data is permanently stored in secure non-volatile EEPROM.

---

## VALET VS-4 OPTIONAL EQUIPMENT

---

The following optional **VALET** equipment is available for use with the **VS-4 Alarm Panel**.

### **Remote Keypad**

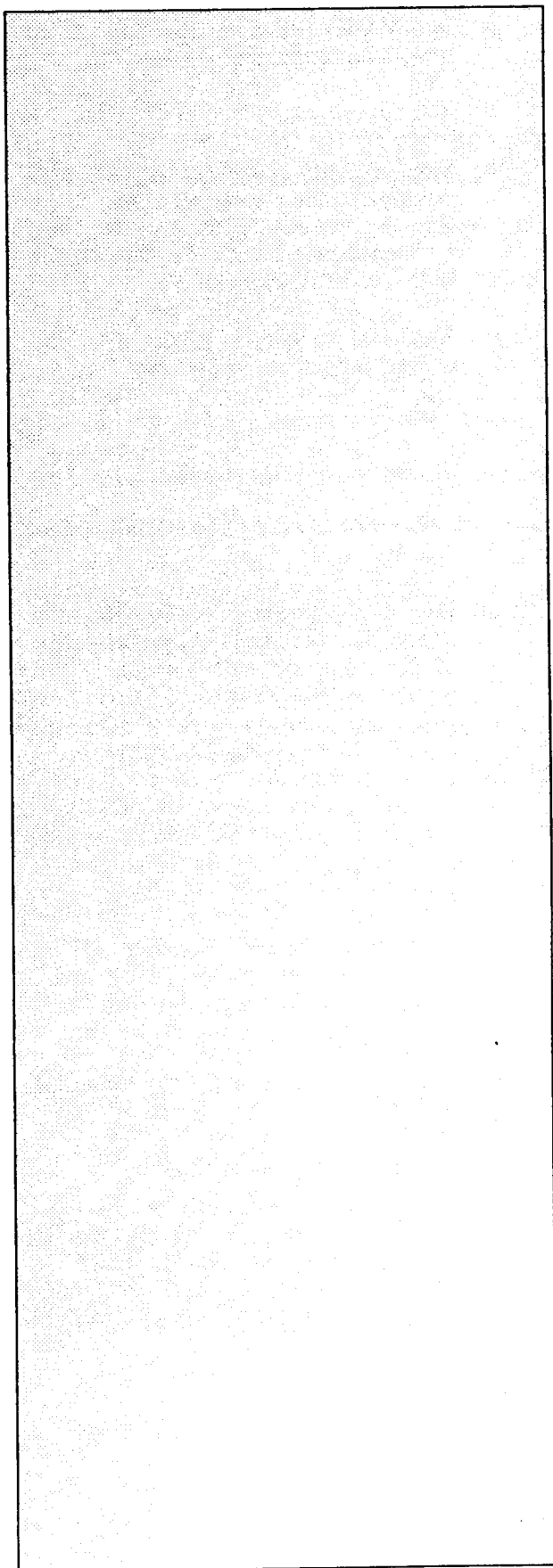
Remote Keypads can increase convenience of operation and security of your system.

### **Remote Keyswitch**

The Remote Keyswitch will simplify the operation of the Control Panel if required.

### **Satellite Siren**

Fitted with its own battery and electronics, a Satellite Siren will operate independantly of the Control Panel if there is any interference to the system wiring.



# SPECIFICATIONS

<b>Dimensions (mm)</b> .....	400 wide x 215 high x 70 deep.
<b>Weight (with 2.2 AH battery)</b> .....	1.9 kg.
<b>Plugpack</b> .....	Input - 240 V a.c. Output - 17 V a.c. at 1.4 A.
<b>Power supply</b> .....	13.8 V d.c. at 1.25 Amps, current limited.
<b>Quiescent Current</b> .....	less than 35 mA.
<b>Operating Voltage</b> .....	10 V to 15 V d.c.
<b>Rechargeable Battery</b> .....	12 V, 2.2 AH.
<b>Battery Charge Current</b> .....	450 mA maximum, current limited.
<b>Dynamic Battery Test</b> .....	Every hour and when the Panel is Armed (whether Mains Power is on or off).
<b>Dynamic Battery Test Low Voltage</b> .....	10.7 V with a 5A load.
<b>Fuses (5 x 20 mm)</b> .....	3 x 1.5 A, fast blow.
<b>Zone Inputs</b> .....	End-of-line resistor = 2200 plus/minus 900 ohms
<b>Remote Tamper Input</b> .....	Same as zone input.
<b>Remote Keyswitch / Panic Button Input</b> ....	Same as zone input.
<b>Remote Keypad Input</b> .....	Proprietary.
<b>Internal Siren Output</b> .....	Open collector, fused.
<b>External Siren Output</b> .....	Open collector, fused.
<b>Satellite Siren Output</b> .....	Proprietary.
<b>Maximum number of Sirens</b> .....	3 x 8 ohm horn speakers (not including Satellite Sirens since they have a separate siren driver circuit).
<b>Latched Alarm (Strobe) Output</b> .....	1.5 A at 12 V, open collector, fused.
<b>Power Output for Optional Equipment</b> .....	1.5 A at 12 V, with battery, fused.
<b>Resetting Alarm Output</b> .....	1.5 A at 12 V, open collector, fused.



# CONTROLS AND INDICATIONS

---

## KEYPAD

---

The keypad consists of 12 buttons or keys. Each button of the keypad is used for three purposes,

- a) to enter a number (eg. 1,2,3),
- b) to select a client programming option (eg. CODE 1),
- c) to select a command (eg. ARM).

The PROGRAM (or P) button is used to begin any programming sequence.

PROGRAM



The ENTER (or E) button is used in all cases to signify the end of the button sequence just pressed.

ENTER



---

## AUDIBLE INDICATIONS

---

Every time a button is pressed, the Panel responds with a very brief beep in acknowledgement.

At other times, the beeper will sound various warnings such as 10 beeps for a low battery.

The beeper is also used to indicate whether the entry was valid or invalid. For example, whenever E is pressed, all the buttons pressed before it are checked to see whether they are valid. If they are valid, the response will be 3 short beeps.

When Arming the Panel, 1-4 beeps will indicate that a zone is unsecured, eg. Zone 3 will be indicated by 3 long beeps.

If they are invalid (or incorrect) the response will be 1 long beep and they will be ignored.

A continuous tone on Arming indicates a Tamper or 24-Hour zone is unsecured. During Entry time, it indicates that an alarm has occurred.

## VISUAL INDICATIONS

The panel has 11 indicator lights. Each light has three basic states to indicate function. These are:-

OFF



ON



FLASHING



### EXCL



No Zones are Excluded.



The Panel is in Exclude mode.



A zone has been Excluded.

### ARMED MONITOR



The Panel is DISARMED.



The Panel is ARMED.



The Panel is in MONITOR mode.

### PROG



The Panel is in Normal Operation mode.



The Panel is in Program mode.



(fast) The program memory is faulty



(slow) The Panel is in Installer Program mode.

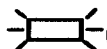
### ALARM



No Alarms



MEMORY mode is selected.



(fast) An alarm has occurred. It will flash simultaneously with the cause of the alarm or on its own if a Panic or Code Alarm has occurred.

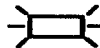


(slow) After Disarming, this indicates there is an alarm stored in memory.

### BATTERY




The Panel's battery is healthy.



The Panel's battery is low.


If flashing in unison with the Tamper light, the Satellite battery is low.

## MAINS

 The Mains power supply is connected and turned on.

 The Mains power supply is disconnected or turned off.

## TAMPER

 The Control Panel's tamper is secured, the Satellite's tamper is secured and the Satellite's battery is healthy.

 The Tamper switch of the Panel or the Satellite is unsecured.

If flashing in unison with the Battery light, the Satellite battery is low.


## ZONE INDICATIONS

### ZONES

1                      2                      3                      4


There are 4 Zone indicator lights above the keypad. In normal operating mode they show the following states:-

 Zone secured.

 Zone unsecured (unless it is a 24 Hr zone).

 (fast) 24 Hour zone unsecured or in alarm.

 (fast) Primary alarm - ie. the first zone to become unsecured and cause the alarm.

 (slow) Secondary alarm - ie. those zones that have become unsecured during the Alarm Reset time.

As explained elsewhere in this manual, these zone lights are used to indicate other information in the Memory, Exclude, Monitor, Installation and Program modes.

ZONES				
ALARM	1	2	3	4
				TAMPER EXCL PROG
<div>PANIC</div>				
<div> <div>ARMED/MONITOR</div> <div>MAINS</div> <div>BATTERY</div> </div>				
<div> <div>1</div> <div>2</div> <div>3</div> <div>4</div> <div>5</div> <div>6</div> <div>7</div> <div>8</div> <div>9</div> <div>PROG 0 ENTER</div> <div>ARM</div> </div>				

# PROGRAMMING

---

## HOW TO ENTER PROGRAM MODE

---

The Program Mode is entered whenever programming options are to be changed.

To enter the program, press

**IMPORTANT:** The Control Panel will automatically exit the Program Mode if no keys are pressed within a two minute period.

PROGRAM . . . Code 1 . . . ENTER . . . 3 beeps

The Program light will be illuminated.

---

## HOW TO PROGRAM

---

Programming the VALET VS-4 is achieved via the keypad on the front. Every time a button is pressed, the Panel responds with a very brief beep in acknowledgement. Each button is used for three purposes,

- a) to enter a number (eg. 1,2,3),
- b) to select a programming option (eg. Code1) and
- c) to select a command (eg. ARM).

**Note:** *the programming options can only be selected whilst in PROGRAM mode.*

**Programming of options can be carried out in any order.**

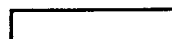
The PROGRAM button is used in the selection of PROGRAM mode, and thereafter in the selection of the option to be programmed.

PROGRAM



The ENTER button is used in all cases to signify the end of the button sequence just pressed.

ENTER



Visual feedback of the options programmed is achieved by illuminating the zone indicator lights or flashing the ALARM light. The particular type of indications are described with the setting of each option in the following pages.

One long beep indicates an invalid entry

---

## ACCESS CODES

---

The Control Panel may be programmed with up to 4 separate Access Codes. Therefore each user may be allocated with their own unique code for higher security.

### REMEMBER...

- Access CODE 1 (master code) **MUST** be programmed.
- All codes must contain a minimum of 3 digits to a maximum of 6 digits and must not begin with a zero.
- Codes 2,3 and 4 are optional.
- A code may be cancelled by beginning the code with zero.
- As a security measure, the existing code will not be displayed and the new code must be entered twice. If the second entry differs from the first, the existing code will remain unchanged.

1) To program **code 1** to be, say, **3456**, then enter:

**P 1 E 3456 E 3456 E**

2) To program **code 2** to be, say, **9765**, then enter:

**P 2 E 9765 E 9765 E**

3) To **CANCEL code 2**, then enter:

**P 2 E 09765 E 09765 E**

Access Codes 3 and 4 are programmed as above.

---

## ENTRY DELAY TIME

---

The Entry Delay Time is the time the Control Panel gives you to Disarm the Panel after a delay zone is unsecured.

For maximum security, the Entry Delay Time should be as short as possible.

The Entry Delay Time can be set to a minimum of 1 second up to a maximum of 99 seconds.

1. To view the current Entry Delay Time, enter:

**P 5 E**

2. The value programmed will be displayed via the ALARM light. The display of the current value must be complete before a new value can be entered.
3. To change the current value to, say, 10 seconds enter: **10 E**

The ALARM light will flash once, pause and then flash 10 times (for the 0) to indicate the new value.

---

## EXIT DELAY TIME

---

The Exit Delay Time is the time the Control Panel gives you to secure and depart the premises after the Panel is Armed.

The Exit Delay Time should be just long enough to allow departure comfortably without rushing and making mistakes.

The Exit Delay Time can be set to a minimum of 1 second up to a maximum of 99 seconds.

1. To view the current Exit Delay Time, enter:

**P 6 E**

2. The value programmed will be displayed via the ALARM light. This display of the current value must be complete before a new value can be entered.
3. To change the current value to, say, 85 seconds enter: **85 E**

The ALARM light will flash 8 times, pause and then flash 5 times to indicate the new value..

---

## MONITOR MODE TYPE

---

The VS-4 provides a unique Monitor mode to ensure your security even while the Panel is Disarmed and the premises are occupied.

Typically, Monitor mode is used to monitor the perimeter zones (doors, windows) of a house while the occupants are at home or to monitor entry through front doors or fire doors in shops and offices while the premises are in use.

You can program which zones are to be monitored as well as select 1 of 4 different types of Monitor alarms.

The 4 different types of Monitor mode alarms are:

- 1 = Beeper warning for the duration of the Panel Entry Time, then full siren alarm. Used for perimeter protection.
- 2 = Beeper and siren operate for 2 seconds only. Use this for medium security warnings or as a walk test mode.
- 3 = Full siren alarm immediately. Use this for high security such as monitoring fire doors etc.
- 4 = Zone number is beeped out only. Use this for "door opened" warning.

To select, say, Monitor mode 3, enter:

**P 7 E 3 E**

When the above option is programmed into the Panel, zone 3 light will flash on for 1 second.

Talk to your security installation company about your specific requirements.

---

## ZONES TO BE MONITORED

---

Any zone can be selected for operation in Monitor mode. However, do not select a zone that has been installed to generate a 24 hour alarm (eg. Fire Detector).

To remove a zone from the Monitor mode selection, re-enter the zone number.

To program, say, zones 2, 3 and 4 to be **Monitor zones**, enter:

**P 8 E 2 E 3 E 4 E**

As each zone is programmed, the corresponding zone light is illuminated (if it was previously off). If the zone light was previously on, it will be extinguished, thus de-selecting that zone from Monitor mode.



## PROGRAMMING SUMMARY

<u>DESCRIPTION</u>	<u>OPTION</u>	<u>DEFAULT</u>	<u>PROGRAMMED</u>
Code 1	P1E code E code E	-	<b>DO NOT RECORD CODES HERE</b>
Code 2	P2E code E code E	-	
Code 3	P3E code E code E	-	
Code 4	P4E code E code E	-	
Entry Delay Time	P5E time E	20 secs	(1-99)
Exit Delay Time	P6E time E	60 secs	(1-99)
Monitor Type	P7E type E	Type 2	(1-4)
Monitor Zones	P8E zone E....	All Zones	(1-8)

<u>DESCRIPTION</u>	<u>OPTION</u>	<u>DEFAULT</u>	<u>PROGRAMMED</u>
Code 1	P1E code E code E	-	<b>DO NOT RECORD CODES HERE</b>
Code 2	P2E code E code E	-	
Code 3	P3E code E code E	-	
Code 4	P4E code E code E	-	
Entry Delay Time	P5E time E	20 secs	(1-99)
Exit Delay Time	P6E time E	60 secs	(1-99)
Monitor Type	P7E type E	Type 2	(1-4)
Monitor Zones	P8E zone E....	All Zones	(1-8)



# OPERATION

---

## GENERAL INFORMATION

---

This section describes the operation of a typical Control Panel installation. Keep in mind that your installation may vary depending on the selected options and equipment.

The Control Panel is normally operated via the keypad on the front of the Panel or the optional Remote Keypad.

The operating instructions which follow will endeavour to cover the most common options. If you have any doubts speak to your Installer.

---

## OPERATING RULES

---

Generally, the Panel will be in the Disarmed, Armed or Monitor modes which provide different levels of security for your premises.

Three other temporary modes, Program, Memory and Exclude, allow you to perform various operations. The Panel will automatically exit from these temporary modes if you do not press any buttons on the keypad within a 2 minute period.

The optional KEYSWITCH is operated by turning it clockwise (until it stops) momentarily.

If you make a MISTAKE while entering any codes, press the **END** button and start again.

When you are required to enter your Access code, you are given THREE opportunities to enter it correctly. After the third invalid attempt the alarm is activated (requiring the correct code to silence the alarm). This prevents anyone trying to guess your code by entering random numbers.

## ARMING THE CONTROL PANEL

The Control Panel must be ARMED prior to vacating the premises in order to detect intruders.

Ensure that the Panel is not in Program, Memory or Exclude modes.

**NOTE:** *If the panel is already in alarm, you must first silence the alarm before you can Arm.*

There are three methods of Arming the Panel.

- a) Normally the panel is ARMED by entering on the keypad...

**0 E**

- b) However, your Installer may have programmed the Panel to require the entry of a code to Arm the Panel.

**0 (code) E.**

- c) If the optional Keyswitch is connected, this is turned momentarily to ARM the Panel.

1. **CHECK** that all windows and doors are securely locked.

2. **KEY IN...**

**0 ENTER**

**OR**

**0 <code> ENTER**

3. The ARMED/ MONITOR light should be **ON**.

4. **LEAVE** the premises within your Exit Delay Time.

5. At the end of the Exit Delay Time, three beeps will indicate successful Arming.

If something is wrong when Arming the control panel, the normal 3 beeps will be replaced by other warnings:

**10 BEEPS**

- Mains power is turned OFF
- Control Panel battery is low
- Satellite battery is low.

**LONG BEEPS**

- Extra long beeps are used to warn that at least one zone is unsecured e.g. 3 beeps for zone 3. Check the zone and ensure it is secure before departing.

**CONSTANT BEEP**

- A constant tone indicates an unsecured 24 hour zone (tamper, panic, 24 hour zone).

**SIREN WARNING** At the end of the Exit Time, all zones should be secured. If any are unsecured, the siren will sound as a warning to indicate that those zones have been automatically Excluded. For maximum security, you should return, DISARM, check the premises and then ARM again. Continual warnings could mean that a detector is faulty and may have to be manually Excluded. If the Auto-Exclude option is disabled, the siren will sound continuously if a zone is unsecured at the end of Exit Time.

## DISARMING THE CONTROL PANEL

Upon entering the protected premises through a delay zone, the Control Panel responds with **BEEPS AT ONE SECOND INTERVALS** as a reminder to Disarm. You then have your programmed Entry Delay Time to Disarm the Panel by either:

- a) Entering one of your access codes, OR
- b) Activating the keyswitch.

If the Panel is not Disarmed by the end of the Entry Delay Time, an alarm will occur. You may still enter your code to silence the alarm.

If one of your codes is, say, 7676 then to Disarm, enter...

**7676 E**

If you make a mistake in entering your code, then you must press **E** and start again. Three incorrect entries will cause an alarm.

1. **ENTER** the protected premises via a **DELAY ZONE**.
2. **LISTEN** for the beeps coming from the panel.
3. **KEY IN...**      *<code>* **ENTER**
4. The **ARMED/MONITOR** light should now be extinguished..

A continuous beep on entry is a warning that an alarm occurred while the Control Panel was Armed, the external strobe light (if fitted) will also be flashing as a reminder.

The 1 second entry beeps and the continuous alarm warning can be **DISABLED** as a function of the Installation options.

## MONITOR MODE

Monitor mode allows you to ARM selected zones while others are ignored. Typically, Perimeter zones (doors and windows) can be Monitored while the occupants are at home.

To select MONITOR mode, either

- a) press **8 E**, OR
- b) If you are using a Remote Keyswitch, first Arm the Panel (by turning the keyswitch once), then turn the keyswitch twice within 2 seconds.

The Control Panel will respond with 3 beeps and the Armed/Monitor indicator will **FLASH** to indicate that you are in Monitor mode.

Monitor mode cannot be selected while in Program, Memory or Exclude modes.

To EXIT from monitor mode, either

- a) Enter **<code> E** to DISARM, OR
- b) Activate the keyswitch momentarily to Disarm, OR
- c) Enter **0 E** or **0 <code> E** to ARM the Panel.

**NOTE:** If an alarm occurs while in Monitor mode, RESET to silence the alarm by entering **<code> E** or activate the Keyswitch.

1. To **ENTER** monitor mode **KEY IN...**

**8 ENTER**

2. If an **ALARM** occurs, the respective zone light and the Alarm light will flash.

3. To **SILENCE** the alarm key in...

**<code> ENTER**

**((3 beeps))**

4. To **EXIT** Monitor mode (if there are no alarms sounding), key in... **<code> ENTER**  
**((3 beeps))**

If an alarm does occur in Monitor mode, the zone light will remain flashing as a memory until you exit Monitor mode.

---

## EMERGENCY PANIC

---

For personal protection, the Control Panel contains an **INSTANT** panic feature. Panic can be used to...

- Scare away intruders inside or outside your premises.
- Summon help from friends or neighbours.
- Test the operation of the siren.

To activate the emergency Panic alarms key in :

**PANIC** or 3 E

To SILENCE the siren, you must key in:

**<code> E**

*Panic cannot be used while the Panel is in Program, Memory or Exclude modes.*

If you have the optional Remote Keyswitch, press the separate panic button fitted above the Keyswitch to operate the siren. Use the Keyswitch to silence the siren.

1. <b>EMERGENCY I</b>	
2. KEY IN... <b>PANIC</b> or	
3 ENTER	<b>&lt;code&gt; ENTER</b>
	<b>((3 beeps)))</b>
3. The siren will <b>SOUND</b>	4. The Siren will <b>STOP</b>

## ALARMS

Alarms may be caused by one of the following conditions:

- A Zone has been activated while the Panel was Armed.
- A Tamper circuit has been activated.
- A Panic button has been activated.
- A 24 Hour Zone has been activated.

All of these can cause your sirens and strobe to operate. Various visual indications relevant to the alarm will be retained in the memory. If this occurs, disarm your Control Panel which will reset the alarm. The cause of the alarm can be identified by entering the Alarm Memory Mode.

ALARM



plus



indicates

CAUSE

## RESETTING AN ALARM

Your Panel can be reset and the alarm silenced by entering your CODE followed by the **END** button.

Alternatively, if a Keyswitch is installed, the Panel may be reset by momentarily activating the Keyswitch.

If you arrive at your premises and find the strobe light flashing (if installed), reset the Panel as above. Refer to the table on opposite page to help you interpret the flashing lights on the Panel.

<code> ENTER (((3 beeps)))



## ALARM MEMORY

The 4 Zone Control Panel contains a comprehensive Alarm Memory to show those alarms that occurred while the Panel was last Armed. To view the MEMORY display, key in. . .

This Memory display may only be selected while the Panel is in the Disarmed, Monitor or Armed modes.

5E

The Panel will respond with 3 beeps, the ALARM/MEMORY light will be illuminated and the other lights will change to show the alarms, if any.

1. KEY IN...

5 ENTER (((3 beeps)))

2. OBSERVE lights.



3. To EXIT press ENTER.

ENTER (((3 beeps)))

The indicators are used as follows:

### ZONE LIGHTS

- FAST FLASH for a Primary alarm, ie. point of entry.
- SLOW FLASH for a secondary alarm,  
ie. other zones entered by the intruder.

### ARMED LIGHT

- FLASH for a Panic or Code Alarm.

### TAMPER LIGHT

- FLASH for a Tamper Alarm,  
ie. Siren covers, Satellite covers etc.

### BATTERY LIGHT

- FLASH for a Low Battery.

### MAINS LIGHT

- FLASH for a Mains Failure.

### BATTERY and TAMPER LIGHTS

- FLASH for Satellite Low Battery.

If a zone alarm has occurred and the sirens reset, then another zone alarms after this time, two primary alarms will be indicated (2 fast flashing lights).

## EXCLUDING ZONES

If a detector becomes faulty and cannot be secured when Arming the Panel, then its zone may be excluded, ie. ignored by the system so that it does not generate false alarms. Zones can only be excluded during the EXIT DELAY time.

To enter the Exclude mode, **FIRST ARM THE PANEL** and then press **7 E**.

All the lights will be turned off and then the Zone Excluded light will show a steady light. You may now exclude zones.

To exclude, say, zones 2 and 4 after Arming, press the buttons...

**7 E 2 E 4 E E**

Zone lights 2 and 4 will turn on.

1. **ARM** the Panel.

2. **KEY IN ...**                      **7**      **ENTER**                      **EXCL** light on

3. **KEY IN** the zone/s to be **EXCLUDED**

**<zone> ENTER**                      **<zone> ENTER**

**ENTER**

4. To **EXIT** press **ENTER**

If you make a mistake, enter the zone number again to remove it from your selection.

Zones which you exclude will be indicated by the relevant zone light showing a steady light in the Exclude mode.

Premises can achieve a higher level of security by partially Arming the Control Panel when people still occupy some areas. To do this, first Arm the Panel and then exclude those zones that the people are occupying. When it is time for those people to leave, they simply include those zones and depart the premises. The Exit Delay time will be automatically re-enabled allowing them time to depart.

## INCLUDING ZONES

Zones which have been Excluded, may be included while you are in the Armed, Disarm or Monitor modes.

All Excluded zones are **automatically** Included when the panel is Armed. Thus if a detector is still faulty it must be Excluded again.

The main reason for providing the capability to include zones, is to allow an easy means for Employees working back to include their own areas on leaving the premises. The Exit Time will re-start automatically .

Pressing **7E** will light the zone lights for the zones that have been Excluded.

To Include, say, zones 2 and 4, press

**7 E 2 E 4 E E**

Zone lights 2 and 4 will turn off.

1. ENTER...

**7 END**

2. ENTER the zone/s to be INCLUDED.

**<zone> ENTER <zone> ENTER**

3. To EXIT press ENTER. **ENTER**

Any attempt to include a zone which has not already been excluded will result in one long beep and the zone will remain unchanged.

If you make a mistake selecting a zone to Include, it is not possible to exclude that zone without returning to the Exclude Zone option.

---

NOTES

---

# TESTING AND TROUBLESHOOTING

---

## TESTING

---

To ensure the integrity of your security system, it should be checked on a regular basis.

YOU can carry out any of the tests outlined below or engage a qualified Technician from a licensed Alarm Company to carry out a more technical assessment according to Australian Standards A.S. 2201.1.

### 9.2 MAINTENANCE (extract A.S. 2201.1)

#### 9.2.1 Routine maintenance.

**9.2.1.1 General** Routine maintenance visits to the alarmed premises shall be made by an authorised representative of an alarm company at a minimum rate of twice per year with no more than 7 months between visits.

## SIREN TEST

- Enter **3 E**, Siren will sound
- To reset siren ENTER **<code> E**.

## SYSTEM CHECK

- ARM Panel **0 E** or **0 <code> E**.
- Wait for Exit Time to expire - trigger any Instant zone and the siren should sound, OR trigger a Delay zone - wait for the Entry Time to expire and the siren should sound.
- Reset the panel **<code> E**.

## WALK TEST

To check correct operation of all zones (indicated by a 2 second siren and beeper warning).

**NOTE:** Programming described in steps 1-4 are normal default values. Therefore these steps may be bypassed if Monitor mode is not being used and has not been reprogrammed.

1. Enter Program mode **P <code> E**

2. Select Monitor mode **2 P 7 E 2 E**

3. Set all the zones to Monitor zones.

**P 8 E 1E 2E 3E 4E .**

(Select only those zones whose zone lights are not lit.)

4. Exit the client Program mode **P E**

Ensure that all zones are secured and then-

5. Select Monitor mode **8 E**.

Now move around your premises and unsecure each detector in turn. The siren will operate for 2 seconds each time a detector is unsealed.

When you have tested all detectors, check the control panel to ensure that all zone indicators are flashing ie. all zones have been tested.

6. EXIT FROM MONITOR MODE by Disarming the panel.

7. Don't forget to re-program the Monitor mode type, and Monitor zones back to their normal settings.

---

## TROUBLESHOOTING GUIDE

---

<b><u>SYMPTOM</u></b>	<b><u>POSSIBLE CAUSE</u></b>	<b><u>CORRECTIVE ACTION</u></b>
Zone light on or long beeps on Arming.	Zone detection device (eg. reed switch, movement detector) unsecured. Number of beeps determine which zone is unsecured.	Close door or window. Find cause of movement.
10 beeps upon Arming. Mains light flashing. Battery light flashing.	Mains power off. Battery low.	Check plugpack is plugged in and power point on, or call Installation Company.
10 Beeps at any time (mains/battery light flashing).	(as above)	(as above)
1 long beep during keypad entry.	Invalid keypad entry.	Press ENTER button and re-enter.
Constant tone upon Arming.	Tamper, Panic or 24 hour zone unsecured.	Check Panic button (if installed), or call Installation Company.
2 second siren at end of Exit Time.	Zone unsecured before expiry of Exit Time.	Re-enter premises, Disarm system, check zone Excluded status to determine zone at fault.
Constant tone on entering premises.	Alarm occurrence since last Arming of Panel.	Check Alarm memory to determine zone at fault.
External strobe light flashing.	Alarm occurrence since last Arming of Panel.	Check Alarm memory to determine zone at fault.
Siren sounding when system Disarmed.	Tamper, Panic or 24 hour zone activated.	Reset alarm by entering code or activating Key-switch, check panic buttons (if installed), or call Installation Company.
Armed/Monitor light flashing.	Monitor mode entered by mistake.	Exit monitor mode.
Zone Excluded light flashing.	A zone has been excluded.	Check zone Excluded status. Arm Panel with all zones secured.
Tamper light flashing.	Tamper unsecured.	Call Installation Company.
Alarm light flashing.	Alarm in memory.	Check Alarm memory to see cause of alarm.

# INSTALLATION RECORD

<b>SUPPLIED BY</b>	
--------------------	--

PHONE NO. office		PHONE NO. control room	
------------------	--	------------------------	--

INSTALLED BY		DATE	
--------------	--	------	--

**OPTIONAL EQUIPMENT INSTALLED**

[illegible]

## OPERATION SUMMARY

Arm . . . . .	<b>0</b> <b>E</b> or <b>0</b> <Code> <b>E</b> or Keyswitch
Disarm . . . . .	<Code> <b>E</b> or Keyswitch
Reset Alarm . . . . .	<Code> <b>E</b> or Keyswitch
Monitor Mode . . . . .	<b>8</b> <b>E</b> or Keyswitch
Exit Monitor Mode . . . . .	<Code> <b>E</b> or <b>0</b> <b>E</b>
Alarm Memory . . . . .	<b>5</b> <b>E</b>
Exit memory . . . . .	<b>E</b>
Exclude Zones . . . . .	ARM then <b>7</b> <b>E</b> zone <b>E</b> zone <b>E</b> etc.
Exit Exclude Mode . . . . .	<b>E</b>
Include Zones . . . . .	<b>7</b> <b>E</b> zone <b>E</b> zone <b>E</b> etc.
Exit Include Mode . . . . .	<b>E</b>
Panic Alarm . . . . .	<b>3</b> <b>E</b>

## ZONE SUMMARY

	<b>TYPE</b>	<b>LOCATION</b>
ZONE 1	.....	.....
ZONE 2	.....	.....
ZONE 3	.....	.....
ZONE 4	.....	.....
(example)	delay	front door